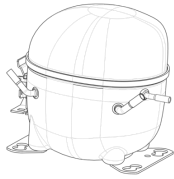


220-240V 50Hz 1~

**GENERAL DATA****Application:** MBP**Refrigerant:** R404A**Evaporating Temperature Range:** -20°C to 10°C**Compressor Cooling:** Fan**Fan air flow:** 520 m³/h**Maximum Condensing Pressure - Operating:** 24.71 bar**Maximum Condensing Pressure - Peak:** 27.71 bar**Type:** Hermetic reciprocating**Technology Type:** On-Off**Expansion Device:** Capillary Tube or Expansion Valve**Packing Quantity:** Single - 1 pc**Displacement:** 12.11 cm³**Horse power:** 3.4 hp**Approvals:**     

Bore: 27.78 mm
Stroke: 20 mm
Oil Charge: 350ml +/-15ml
Free Internal Volume: 2.1 cm³
Maximum Recommended Refrigerant Charge: 350 g
Oil Type Configuration: Polyolester
Oil Type Viscosity: ISO22
Compressor pressurization: Dry air charge
Weight: 11.8 kg

Motor Type: CSIR
Starting Torque: HST
Voltage working range at 50 Hz: 198-254 V
Maximum Motor Temperature: 130 °C
Start Winding Resistance: 13.91 Ω (± 10%) at 25°C
Run Winding Resistance: 4.48 Ω (± 10%) at 25°C
Locked Rotor Amperage (RLA): 22 A

MOUNTING ACCESSORIES

	Description	Code
Anchorage:	no	-
Capacitor Bracket:	no	-
Washer:	no	-
Pin:	no	-
Clip:	no	-
Rotolock valve:	no	-
Cover:	yes	2075282
Grommets:	yes	2221011
Sleeves:	yes	2222018
Terminal Board:	yes	1027060
Overload Protector Bracket:	yes	2075299

ELECTRICAL COMPONENTS

	Component type	Description	Code
Starting Device:	Current relay	MTRPH-0055-65	2334148
Motor Protection:	External 3/4"	T0743/G6	2319080
Start Capacitor:		88-108 MFD 330V	2252348

EXTERNAL CHARACTERISTICS

Base Plate: European
Tray Holder: No
Height: 206 mm

	Internal Diameter (mm)	Material	Shape
Suction Connector	8.1	Copper	Slanted 42°
Discharge Connector	6.1	Copper	Straight
Process Connector	6.1	Copper	Slanted 42°

RATED POINT DATA

Cooling Capacity (W)	Power Consumption (W)	Current Consumption (A)	Gas Flow Rate (kg/h)	Efficiency (W/W)
±5%	±5%	±5%	±5%	±7%
1 901	963	5.03	53.13	1.97

Test condition: ASHRAE, Fan, Return Gas 35°C, Subcooling 8.3K, Evaporating: 7.2°C, Condensing: 54°C, Ambient: 35°C

PERFORMANCE CURVE DATA**220V 50Hz**

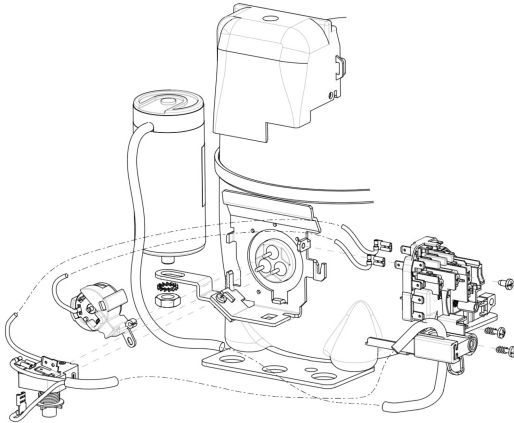
Condensing Temperature (°C)	Evaporating Temperature (°C)	Cooling Capacity (W)	Power Consumption (W)	Current Consumption (A)	Gas Flow Rate (kg/h)	Efficiency (W/W)
		±5%	±5%	±5%	±5%	±7%
35°C	10	2 786	804	4.28	63.45	3.46
	5	2 386	742	4.01	53.69	3.21
	0	2 023	683	3.76	45.04	2.96
	-5	1 697	626	3.53	37.44	2.71
	-10	1 407	572	3.32	30.83	2.46
	-15	1 154	520	3.12	25.15	2.22
	-20	939	471	2.94	20.34	1.99

Condensing Temperature (°C)	Evaporating Temperature (°C)	Cooling Capacity (W)	Power Consumption (W)	Current Consumption (A)	Gas Flow Rate (kg/h)	Efficiency (W/W)
		±5%	±5%	±5%	±5%	±7%
45°C	10	2 422	907	4.72	61.19	2.67
	5	2 074	831	4.38	51.71	2.50
	0	1 756	759	4.07	43.30	2.31
	-5	1 470	691	3.78	35.88	2.13
	-10	1 214	626	3.51	29.40	1.94
	-15	989	565	3.28	23.79	1.75
	-20	795	508	3.07	18.98	1.57

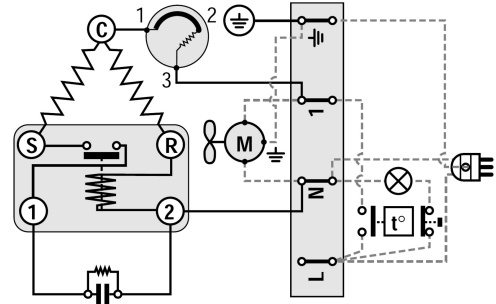
Condensing Temperature (°C)	Evaporating Temperature (°C)	Cooling Capacity (W)	Power Consumption (W)	Current Consumption (A)	Gas Flow Rate (kg/h)	Efficiency (W/W)
		±5%	±5%	±5%	±5%	±7%
55°C	10	2 030	1 027	5.35	57.96	1.98
	5	1 740	935	4.90	48.97	1.86
	0	1 475	847	4.48	40.98	1.74
	-5	1 235	764	4.10	33.94	1.62
	-10	1 020	685	3.75	27.77	1.49

Test condition: ASHRAE, Fan, Return Gas 35°C, Subcooling 8.3K, Evaporating: 7.2°C, Condensing: 54°C, Ambient: 35°C

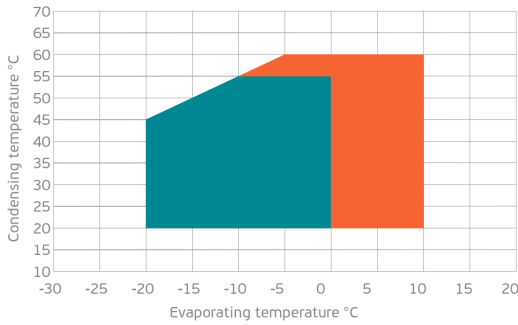
ASSEMBLY INSTRUCTION



WIRING DIAGRAM

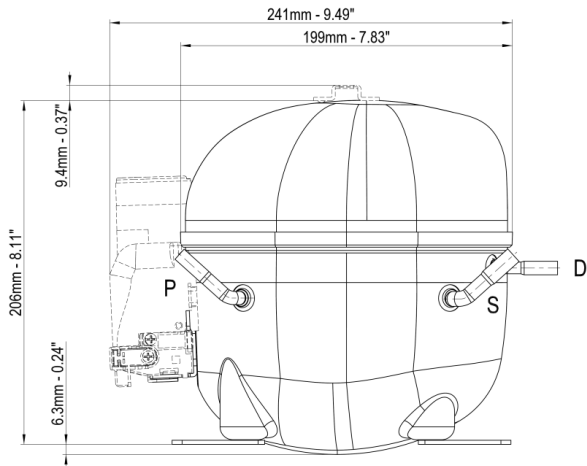


OPERATING ENVELOPE



- Operating Condition
- Transient Condition
- Superheating

NOTE: usage of compressors outside of intended working range cannot make use of the warranty, or should be consulted with Technical support.



	∅ mm	∅ in	Material
S - Suction	8.10 - 8.20	0.32	Cu
P - Process	6.10 - 6.20	0.24	Cu
D - Discharge	6.10 - 6.20	0.24	Cu

