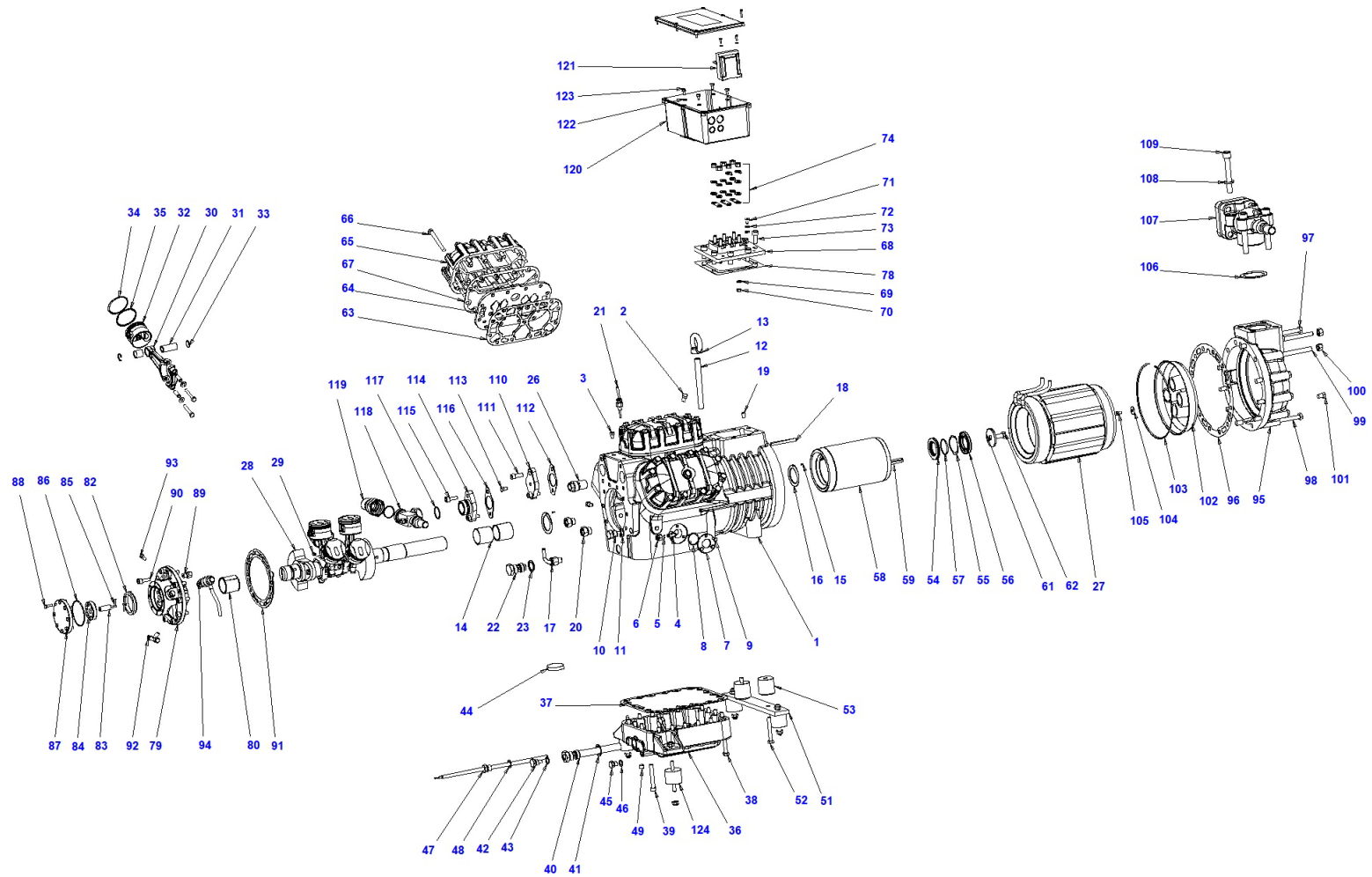


Z 30 126 Y



Pos.	Code	Description	Quantity	Note	Notice:
1	S6401001AA	Compressor body	1		
2	S6501130	Plug 1/4 NPT	3		
3	S1251130	Plug 1/8 NPT	1		
4	RA1001000	Connection 90° 1/4 NPT - 1/4 SAE	1		
5	G200002	Copper nipple	1		
6	G1800F026	Filler 1/4 SAE	1		
7	SOS1	Oil sight glass	2		
8	S3131OR	O-ring for oil sight glass	2		
9	TE1006016	Screw M6x16 UNI5739	6		
10	S8601130	Plug 3/8 gas ISO 228/1	1		
11	S6501056	3/8 gas gasket	1		
12	RM1016160	Screw	1		
13	GO2016000	Raising ring	1		
14	S6501013-A	Main friction bearing	2		
15	SE1004008	Pin	2		
16	S6501011	Thrust collar	2		
17	S860A070	Oil return valve	1		
18	S6301063	Key 8x5x90 UNI 7510	1		
19	GR101016	Stop dowel	1		
20	S650A076	Pressure regulatng valve	2		

Pos.	Code	Description	Quantity	Note	Notice:
21	EC50D-RIC	Temperatur sensor diagnose	1		
22	S6501052AA	Compression connectin for oil filter	1		
23	S8701056	3/4 gas gasket	1		
24	ML_Z	Nameplate	1		
25	RI1025035	Rivet	2		
26	S6301156	Relief valve	1		
27	RS15AAMS	Stator 230-400 / 3 / 50 DOL	1		
27	RS15B	Stator 400 / 3 / 50 SDS	1		
27	RS15CAMS	Stator 400 / 3 / 50 PWS	1		
27	RS15SAMS	Stator 230-400 / 3 / 60 DOL	1		
28	SK6501002	Shaft kit	1		
29	GR100810	Stop dowel	3		
30	S6501003AA	Connecting rod	6		
31	S6501005	Piston pin	6		
32	S6401004-A	Piston	6		
33	S6301149	Circlip	12		
34	S6405001	Compression ring	6		
35	S6406001	Oil scraper ring	6		
36	S8701014AA	Bottom plate	1		
37	S8601015	Gasket for bottom plate	1		

Pos.	Code	Description	Quantity	Note	Notice:
38	TE1210075	Screw M10x75 UNI5737	17		
39	TC2210075	Screw M10x75 UNI5931	3		
40	S4501047-A	Oil strainer	1		
41	S8701056	3/4 gas gasket	1		
42	S8601130	Plug 3/8 gas ISO 228/1	1		
43	S6501056	3/8 gas gasket	1		
44	W3901128	Magnet	1		
45	S1451130	Plug 1/4" gas ISO 228/1	1		
46	S1351056	Gasket	1		
47	S4601351	Sleeve for Crankase Heater	1		
48	S6501056	3/8 gas gasket	1		
49	TA1514000	Plug 1/4" NPT	1		
51	S4501018AA	Thrusting plate	1		
52	TE1210075	Screw M10x75 UNI5737	2		
53	S4301085	Support	2		
54	S6501078	Shaft thrust bearing	1		
55	ANLMKAS62	Spring	1		
56	S6501120	Thrust collar	1		
57	S3175OR	OR3175	1		
58	RR17S	Rotor	1		

Pos.	Code	Description	Quantity	Note	Notice:
59	S4301063	Key 12x8x80 UNI 6604-69	1		
61	S4501045	Washer	1		
62	TE1012035	Screw M12x35 UNI5739	1		
63	S6401031C	Gasket valve plate - body	3		
64	S6401006LL	Valve plate	3		
65	S6501007HH	Head	3		
66	TE1210090	Screw M10x90 UNI5737	39		
67	S8701032	Gasket valve plate - head	3		
68	S8601040	Terminal plate	1		
69	RO1106012	Washer 6.4x12x1.6 UNI 6592	6		
70	DE2206006	Nut M6X1X6 DIN 980	6		
71	TS4006008	Screw M6x8 ISO 7045	1		
72	RO1106012	Washer 6.4x12x1.6 UNI 6592	2		
73	TC2710025	Screw M10x25 UNI5931	8		
74	SK261310	Staple bars connection kit - V/Z/W NEW	1		
78	S4501043C	Connections plate gasket	1		
79	S4951009AA	Flange	1		
80	S6501012-A	Friction bearing flange side	1		
82	S6301069	Oil pump eccentric	1		
83	S6501049	Oil pump stud	1		

Pos.	Code	Description	Quantity	Note	Notice:
84	S4951125	Oil pump gear	1		
85	S4951134	Oil pump spring	2		
86	S3300OR	O-ring for oil pump cover	1		
87	S6301067AA	Oil pump cover	1		
88	TE1006020	Screw M6x20 UNI5739	8		
89	S4951044	Oil pump safety valve	1		
90	TC2410030	Screw M10x30 UNI5931	10		
91	S6501033C	Flange gasket	1		
92	RA2001030	Connection a T 1/8 NPT-1/4 Sae-1/4 Shrader	1		
93	S1251130	Plug 1/8 NPT	1		
94	EC1630DRIC	Diff. pr. switch kit INT250	1		use EC1620RIC with DELTA P2
95	S6301010AA	Suction flange	1		
96	S6501034C	Suction flange - body gasket	1		
97	TE1212140	Screw M12x140 UNI5737	2		
98	TE1212110	Screw M12x110 UNI5737	8		
99	S6301153	Screw M12 L=105	2		
100	DE1112012	Nut M12x1,75x12 UNI 5587	2		
101	S6501130	Plug 1/4 NPT	2		
102	S6501038-A	Suction strainer	1		
103	AN2023000	Ring	1		

Pos.	Code	Description	Quantity	Note	Notice:
104	RO1006024	Washer M6x24 UNI 6593	1		
105	TE1006012	Screw M6x12 UNI5739	1		
106	S6301055B	Valve gasket	1		
107	VGS080078	Valve 2" 1/8	1		
108	RO1016030	Washer M16x30 UNI 6592	4		
109	TC2216110	Screw M16x110 UNI5931	4		
110	S4501060-A	Discharge flange	1		
111	TC2410030	Screw M10x30 UNI5931	2		
112	S4501058D	Valve gasket	1		
113	S1251130	Plug 1/8 NPT	1		
114	S6401060	Discharge flange	1		
115	TC2410030	Screw M10x30 UNI5931	2		
116	S4501058D	Valve gasket	1		
117	V0001559	Teflon gasket	2		
118	VRR060000	Rotalock valve	1		
119	CRS060035	Rotalock port	1		
120	S8601039	Terminal box	1		
121	ECA11D	INT69 TML diagnose module kit	1		use ECA11D-UPG with INT 69 TM
122	RO2006011	Washer 6x10 UNI 1751A	4		
123	TS4006010	Screw M6x10 ISO 7045	4		

Pos.	Code	Description	Quantity	Note	Notice:
124	SK205060	Rubber vibration absorber kit	1		
	S640A004	Piston kit	1		
	SK103711	Discharge valve kit	1		
	SK103800	Suction valve kit	1		
	SK132600	Connecting rod/piston kit	6		
	SK140400	Friction bearing kit	1		
	SK170100	Oil sight glass kit	2		
	SK182100	3 ph terminal box kit	1		
	SK190100	Oil strainer kit	1		
	SK210000	Oil pump kit	1		
	SK231911	Complete electric motor - 230-400 / 3 / 50 DOL	1		
	SK231912	Complete electric motor - 400 / 3 / 50 SDS	1		
	SK231913	Complete electric motor - 400 / 3 / 50 PWS	1		
	SK231916	Complete electric motor - 230-400 / 3 / 60 DOL	1		
	SK2500	Gasket kit	1		
	SK261310	Staple bars connection kit - V/Z/W NEW	1		
	SK4601351	Kit for crankcase heater	1		
	SK49504	Valve plate kit	3		
	SK890000	Kit thrust collar and spring V - Z	1		