







XWEB3000/5000 EVO (v.1.7)


INSTALLATION MANUAL


TABLE OF CONTENTS


1. PRODUCT DISPOSAL (WEEE)	4
2. THE RECIPIENTS OF THIS MANUAL	4
3. PACKAGE	5
4. INSTALLATION	6
4.1 CONTROLLER INSTALLATION PROCEDURE	9
4.2 CONTROLLER CONFIGURATION	10
4.2.1 CONFIGURATION FOR XC400/600/800/900 and XH200/300/400 SERIES	10
4.2.2 CONFIGURATION FOR XJA/XJP/XJM MODELS	10
4.2.3 ENERGY METERS AND THIRD PARTY INSTRUMENT CONFIGURATION	11
5. LOCAL CONNECTIVITY	12
6. REMOTE CONNECTIVITY	13
6.1 GENERAL RULES, AND MINIMUM REQUIREMENTS	13
6.2 DESKTOP	14
6.3 MOBILE	14
6.4 CONNECTIVITY WITH CROSS CABLE	15
6.5 MODEM CONNECTIVITY (“OR POINT-TO-POINT CONNECTION”)	17
6.5.1 SETTING UP THE REMOTE ACCESS CONNECTION	17
6.5.2 MAKING THE REMOTE ACCESS CALL	18
6.6 INTRANET (“OR LAN CONNECTION”) AND VPN CONNECTIVITY	19
6.7 INTERNET CONNECTIVITY ON PUBLIC IP	20
7. OPERATION	20
8. SYSTEM DATA	21
9. TRADEMARKS	21
10. NOTES	22


CAUTION: TO PREVENT FLAMES FROM DEVELOPING OR ELECTRIC SHOCK, AVOID ANY CONTACT BETWEEN THIS DEVICE AND RAIN OR WATER


	<p>CAUTION RISK OF ELECTRIC SHOCK DO NOT OPEN</p>		<p>CAUTION: TO REDUCE THE RISK OF ELECTRIC SHOCK, DO NOT REMOVE THE COVER IT DOES NOT CONTAIN ANY PARTS THAT REQUIRE SERVICING BY THE USER ALWAYS HAVE QUALIFIED STAFF PERFORM THE PROCEDURES.</p>
			<p>THE SYMBOL OF THE LIGHTNING BOLT INSIDE AN EQUILATERAL TRIANGLE IS USED TO ALERT THE USER OF THE POTENTIALLY DANGEROUS NON-INSULATED ELECTRICAL VOLTAGES</p>
			<p>THE SYMBOL OF THE EXCLAMATION MARK INSIDE AN EQUILATERAL TRIANGLE IS USED TO WARN THE USER THAT HE/SHE MUST PAY CLOSE ATTENTION TO THE TOPIC COVERED IN THIS MANUAL</p>


CAUTION	<p>This device must be installed exclusively by service staff with suitable technical training and experience, who are aware of the dangers that they are exposed to. The operations described herein are set forth exclusively for the service staff. The user is not enabled to open the device.</p>
	


CAUTION	<p>Only use modems that are officially supported by this monitoring unit. Dixell srl cannot be held responsible for any damage caused by the use of non-supported modems.</p>
	



CAUTION	<p>Dixell srl reserves the right to amend this manual without prior notice. The latest available version can be downloaded from the internet site.</p>
	

CAUTION	<p>The instructions contained in this manual are common for models XWEB3000EVO/XWEB5000EVO. Any particular features are specified expressly.</p>
	

CAUTION	<p>This control and monitoring unit fulfils EN 12830 for use with probes to detect measurements referred to in 13485</p>
	

CAUTION	<p>This is a class A product. It can cause radio-interference in residential environments. Should this occur, the user should take suitable counter-measures</p>
	

CAUTION	<p>Dixell srl reserves the right to vary the composition of its products without prior notice to the customer, ensuring the identical and unchanged features of the same</p>
	


<p>CAUTION</p> 	<p>The customer shall bear full responsibility and risk for product configuration in order to achieve the results pertaining to installation and/or final equipment/system. Upon the customer's request and following a specific agreement, Dixell s.r.l. may be present during the start-up of the final machine/application, as a consultant, however, under no circumstances can the company be held responsible for the correct operation of the final equipment/system.</p>
<p>CAUTION</p> 	<p>Since Dixell products form part of a very high level of technology, a qualification/configuration/programming/commissioning stage is required to use them as best as possible. Otherwise, these products may malfunction and Dixell cannot be held responsible. The product must not be used in any way that differs from that stipulated in the documentation</p>

1. PRODUCT DISPOSAL (WEEE)

With reference to the DIRECTIVE 2012/19 / UE OF THE EUROPEAN PARLIAMENT AND OF THE COUNCIL of 4 July 2012 on Waste Electrical and Electronic Equipment (WEEE), and to the relevant national implementation regulations, we inform you that users of EEE in households:

- there is an obligation not to dispose of WEEE as mixed urban waste and to separate waste collection of WEEE;
- Public or private collection systems required by local laws must be used for disposal. It is also possible, at the end of its life, to return the equipment to the distributor in case of purchase of a new one.
- This equipment may contain hazardous substances; improper use or incorrect disposal could have negative effects on human health and the environment.



- The symbol  shown on the product or on the packaging indicates that the product must be treated with separate waste.
- In case of incorrect disposal, sanctions can be applied as established by the local laws on waste disposal.

2. THE RECIPIENTS OF THIS MANUAL

The contents of this manual are intended for professional users, such as XWEB installers. It may also be of use to the administrator of the network that it is connected to.

The mechanical product drawings required for any form of intervention and the possible network configurations are all an integral part of this manual.

3. PACKAGE

Before opening the package make sure that the packaging is intact and that there is no sign of impact or tampering. Before starting any operation, it is necessary to check that the XWEB-EVO box contains:

- 1 XWEB-EVO Unit
- 1 power cord
- 2 RACK mount brackets
- 8 Screws to attach the RACK brackets to the XWEB Box
- Disconnectable female connectors (2x2-way, 2x3-way, 1x6-way)
- 4 Rivet feet for table set-up
- 6 Jumpers WITHOUT CLIPS for terminators (JMP1-6)
- 1 DVI-VGA Converter
- 1 Rapid Installation Manual in A5 format



If one of the following parts is damaged, promptly contact your dealer.

You can also receive a modem - which will not be included in the same package - as an option. When using a connection through the modem, always make sure that the type of modem you are about to install is a Dixell-approved model; accordingly, Dixell will not be held responsible for the poor operation of devices that are not expressly approved. The user manual, in the "manuals" section of the Dixell site, contains a list of supported models.

4. INSTALLATION

For installation, the XWEB-EVO system must not be opened in any way. If the box is opened, the warranty will lapse.

XWEB-EVO can be installed in various ways based on the type of user interface access that you wish to provide for the final user. Below is a description of the most complete procedure, i.e. where the system's user interface can be used entirely in local control. If the system has already been configured and you wish to use the interface through modem or Ethernet, points 5 to 9 may be optional. The particular features of these types of connectivity are described herein.

To set up a local installation of the system, we recommend having the following equipment available:

- a Phillips and a slot-head screwdriver;
- a PS2 or USB mouse;
- a PS2 or USB keyboard;
- a monitor with a DVI or VGA connector. We recommend using high definition monitors

The system must be installed referring to the figure below, which illustrates the rear XWEB-EVO panel, and following the points listed here:

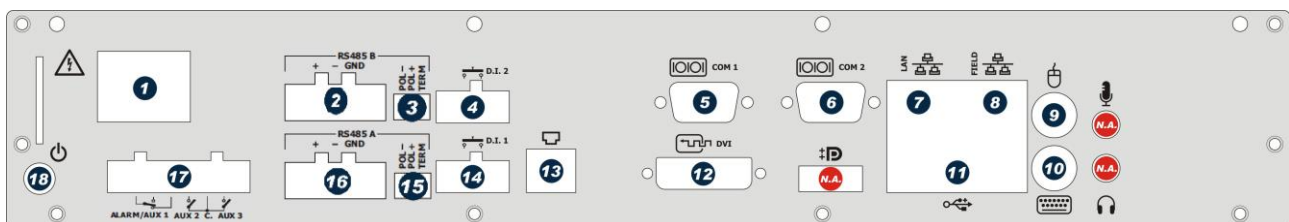
1. The product has a power plug with protective earth. Make sure that the electrical system has a protective earth connection;
2. Attach the XWEB-EVO device in the position it will be used in. If it is installed on a table, set the rubber feet up in the holes on the underside of the device. For rack installation, on the other hand, use the supplied brackets and screws.
3. Connect it to the power mains by the supplied power cord (1). Set the power plug up so that it is easily accessible at all times. **Note:** Do not turn the system on;
4. Connect the RS485, the relays and digital inputs (2)(4)(16)(14)(17), and end and/or polarise the line, if necessary (3)(15);
5. Connect any telephone lines and/or LAN network cables (7);
6. Connect any keyboard and mouse (9)(10)(11);
7. Connect any monitors (12);
8. Connect any printers (11);
9. Connect any modem: internal modem (13) or external modems (05). The cable must not be any longer than 10 m.
10. It is now possible to turn the system on by pressing and releasing (18);



For operator safety and to protect the XWEB system, before performing any sort of operation, connect the system to the electrical network by the supplied cable. Power cord must be the last to be removed.



- Avoid direct passage between operators as much as possible (to avoid electrostatic induction and subsequent discharges);
- If the electrical voltage supply differs from the required rating, this could seriously damage the system;
- Connection errors (and connections that differ from the prescribed ones) can pose a danger to operator safety and cause faults in the system and to the instruments that are connected to it;
- Insert one or more easily accessible disconnecting devices to the exterior of the device to separate the device from the power mains;
- Do not use the device in environments with flammable gases.
- Do not modify the device in any way.



Technical features	
Power supply	100-230 V
Power	60 W
Voltages and maximum current applicable to the AUX terminals 1-2-3	AUX1-2-3 24V AUX1 8A AUX2-3 4A
Operating conditions (temperature, humidity, special conditions)	0/45°C R.H.5÷95% (non-condensing)
Electrical safety (reference standards)	Standard EN 60950-1
Electromagnetic compatibility (reference standards)	Immunity EN 61000-6-2:2005 EN 55024:1998 + /A1:2001 +/A2:2003 EN 61000-4-2:2009 EN61000-4-3:2006 +/A1:2008 EN61000-4-4:2004 EN 61000-4-5:2006 EN 61000-4-6:2009 EN 61000 -4 -8:1993 +/ A1:2001 EN 61000-4-11:2004 Emissions EN 55022:2006+/A1:2007 EN 61000-3-2:2006 +/A1:2009 +/A2:2009 EN 61000-3-3 :2008

Internal modem: list of supported countries			
Argentina	France	Latvia	Russia
Australia	Germany	Liechtenstein	Singapore
Austria	Greece	Lithuania	Slovak Republic
Belgium	Hong Kong, S.A.R. of China	Luxembourg	Slovenia
Brazil	Hungary	Malaysia	South Africa
Canada	Iceland	Malta	Spain
Chile	India	Mexico	Sweden
China	Indonesia	Netherlands	Switzerland
Cyprus	Ireland	New Zealand	Taiwan
Czech Republic	Israel	Norway	Thailand
Denmark	Italy	Philippines	Turkey
Estonia	Japan	Poland	United Kingdom
Finland	Korea	Portugal	United States

CAUTION:



The terminal block to connect AUX1, AUX2 and AUX3 relays cannot be used to pilot high voltage loads directly (higher to 24V). Use an intermediate low voltage circuit and/or suitable remote switch.

LED

LED	Colour	Description
Pwr	Green	On when the system is powered
HDD	Blue	On when the disc executes physical writing operations
Rec	Blue	On when the system is recording data
Ser1/Ser2	Blue	On when the system is reading and/or writing on serial port 485
Mdm	Blue	On when the system runs operations with the analogue modem
DI1/DI2	Blue	On when the system detects the digital input as being active
Aux1/Aux2/Aux3	Blue	On when the system sets the relay output as active
Alarm	Red	On when the system detects an alarm

XWEB-EVO can also operate without having a screen, mouse and keyboard attached. For example, it is possible to use this initial system installation configuration and then disconnect them definitively if you only intend to set up access from the remote station. If you intend to use external peripheral devices, always connect them to the unit before turning it on. Caution: always and only connect the external peripheral devices before turning on XWEB-EVO. If necessary, consult the instructions manual for the individual connected device.

When the system has been launched, the home page will appear (also known as the login page) on the screen connected to XWEB-EVO. Enter user name and password to login.

Note that the user interface for the connection is always the same, regardless of what type of access has been set up: local PC, Intranet or Internet.

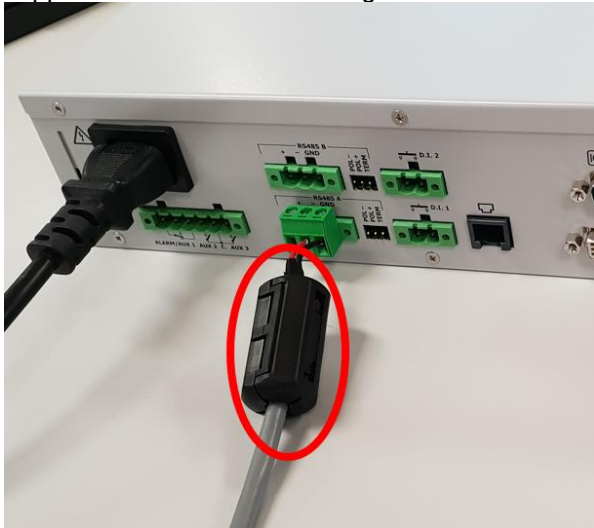
4.1 CONTROLLER INSTALLATION PROCEDURE

XWEB-EVO has two RS485 serial ports that the line for the controller devices need to be connected to. Most Dixell controller devices are supplied with RS485 serial outputs, to connect the instrument to XWEB-EVO without requiring an external module or connecting cable. To check whether this feature is provided, read through the characteristics of the controller in the device manual. Nonetheless, some Dixell devices cannot be supplied with RS485 serial outputs directly but through small external converters: XJRS485 or XJ485. With this device it is possible to convert the output - of the controller - from 5-wire "TTL" to 2-wire "485". If you need to use the TTL/485 converter, be careful to:

- Keep the TTL cable away from any source of electromagnetic disturbance
- Connect each XJ485 module to the instrument by the TTL cable supplied with the module
- Mark the polarity of output 485, which needs to be observed when the instruments are connected to the network

Below is a list of operational tips to achieve the best result in terms of reliability of the instrument network, with RS485 serial connection:

- It is recommended for the serial lines to use the two-wire type cable plus the shielding, with a minimum cross-section of 0.5mm² (eg BELDEN 8772). If it is not possible to use it, apply the supplied ferrites as shown in figure below



- The serial line cable must reach all of the instrument's stations: check the system's floor plan and the various distances that the cable needs to cover;
- The serial line cable can reach a maximum length of 1 km
- Match the polarity marked on the instrument with the polarity of the cable leading to the serial;
- Do not set up any branches on the line:



Correct connection



Incorrect connection

- Keep the serial cable away from power cables and from any possible source of electromagnetic disturbance
- Do not connect the serial cable shielding to the earth connection of the electrical system
- Do not connect the "Gnd" terminal.
- Draw a map of the installation that you are setting up: it may be useful in case of future problems or changes

The two XWEB-EVO 485 serial ports can be used simultaneously and do not conflict with each other. The two lines can be used to create two distinct controller networks, for example a network for the ground floor and another for the first floor.



Attention: polarity and termination parameters on XWEB must be set according to the geography of your controller network; pay attention to the following notes:

Notes on the use of termination resistors (TERM)

It is necessary to insert a termination resistor between the most distant instruments on the RS-485 line (typically XWEB and in conjunction with the last slave). Some devices internally integrate termination resistors, often activated with dip-switches; it is necessary to verify that only the first and last device of the bus have the termination resistance activated. On terminating RS-485 buses it is possible not to insert termination resistors.

Notes on the use of polarization resistors (POL-, POL +)

In order to avoid false signals on the bus, polarization resistors must be inserted. It is important to note that they must be placed in one and only one place in the network, otherwise the communication will get worse; the node in which they are inserted is irrelevant even if it could be convenient to do it on XWEB, verifying that the other instruments of the serial network have not already integrated and permanent ones.

4.2 CONTROLLER CONFIGURATION

On the same line, normally every controller is programmed with its own **unique serial address**, through the **Adr** parameter. Refer to the instrument's installation manual to learn about the access and editing procedures. For a simple description of the categories they belong to, organise address programming progressively. A number of special cases are listed in the pages below.

4.2.1 CONFIGURATION FOR XC400/600/800/900 AND XH200/300/400 SERIES

These instruments have two serial addresses and must be configured in the same way. Refer to the instrument's installation manual to learn about the access and editing procedures.

4.2.2 CONFIGURATION FOR XJA/XJP/XJM MODELS

XJA/XJP/XJM series instruments are configurable with one or more modbus addresses. Refer to their installation manual for the configuration procedures.

4.2.3 ENERGY METERS AND THIRD PARTY INSTRUMENT CONFIGURATION

For non-Dixell instruments it will be necessary to configure the serial to work with baudrate 9600bps, 8bit, No Parity and 1 Stop bit (aka "9600,8,N,1). The use of another serial configuration may not be recognised by XWEB-EVO and this would lead to incorrect device operation.

To enter non-Dixell instruments, which are nonetheless required by the system, (for example the Carlo Gavazzi Energy Analyser), do the following:

- a. Enter "Menu→Devices Setup" and choose any instrument. To enter Energy Analyzer "WM22-DIN-AV5", select "ENERG.ANAL"
- b. Press "Add/Remove Device(s)". And, from the list, select the library for the device.
- c. Drag'n'Drop on 'Add Device(s)' and fill in the required information on the screen

5. LOCAL CONNECTIVITY

The most common and frequently used user interface access is local access through a screen, mouse and keyboard, directly connected to XWEB-EVO. The system can also operate without having these peripheral devices connected, for example, use these modes for the initial system configuration; they can later be disconnected definitively if you only intend to provide access from a remote station.



XWEB-EVO supports PS/2 mouse and keyboard or USB mouse and keyboard, which can be connected to any available USB port.

The screen that can be connected to XWEB-EVO must have a DVI connector (or VGA, using the supplied accessory adapter) and have a minimum resolution of 1024x768. We recommend using a screen with a resolution of more than 1024x768 pixel. Check the screen instructions manual for the supported resolutions.

6. REMOTE CONNECTIVITY

6.1 GENERAL RULES, AND MINIMUM REQUIREMENTS



The XWEB-EVO user or installer can access his/her user interface either locally from the screen, keyboard or mouse, or from a PC which must be connected and configured to communicate with the XWEB-EVO network. The XWEB-EVO Ethernet port that needs to be used for remote connectivity must be the LAN port, shown below



Attention: For the technical characteristics and maintenance of the quality of the electrical signal, it is recommended to use shielded cables also on the connection cables to the data network and in case they are not available, please apply the supplied ferrites as in figure below



Performances in the use of a PC as a user interface terminal is greater than the use of local connectivity, therefore its use is recommended above all during the initial configuration phase. The user interface available remotely is the same locally available.

The PC that you wish to use for the connection must fulfil and support the minimum characteristics for installation and use:

6.2 DESKTOP

Browser	Support	Minimum Version
Microsoft Internet Explorer (IE)	NOT SUPPORTED	
Microsoft Edge	SUPPORTED	12+
Mozilla Firefox	SUPPORTED	28+
Google Chrome	SUPPORTED	29+
Apple Safari	SUPPORTED	9+
Opera	SUPPORTED	17+

6.3 MOBILE

Browser	Support	Minimum Version
Apple iOS Safari	SUPPORTED	9+
Android Stock	SUPPORTED	4.4+
Android Google Chrome	SUPPORTED	29+
Android Mozilla Firefox	SUPPORTED	28+

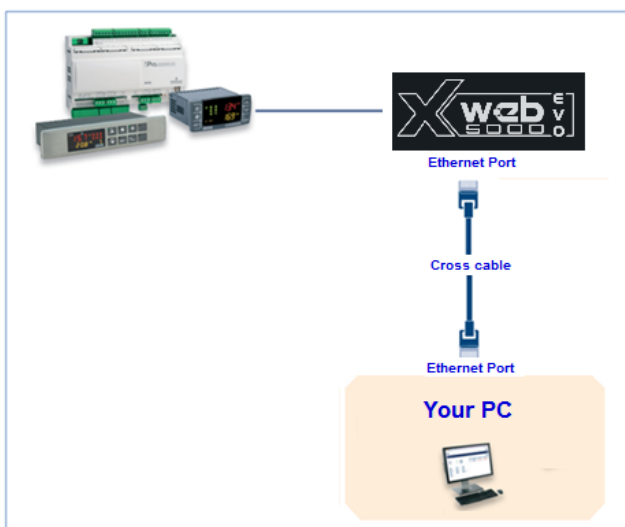
In the following sections, general information is provided on the possible network configurations, suitable for connection between XWEB-EVO and your computer. From the start we recommend following the advice of an IT expert and/or your network administrator to assess which configurations are most suited to your needs. Antivirus, firewall and toolbar software (for example YAHOO and/or GOOGLE) can impede you from viewing XWEB-EVO pages correctly. We recommend checking the configuration of this software and adding their XWEB-EVO IP addresses to the list of safe sites. With firewalls, make sure that ports 80 and 22 are mapped towards XWEB-EVO so that it can be reached from outside..

6.4 CONNECTIVITY WITH CROSS CABLE

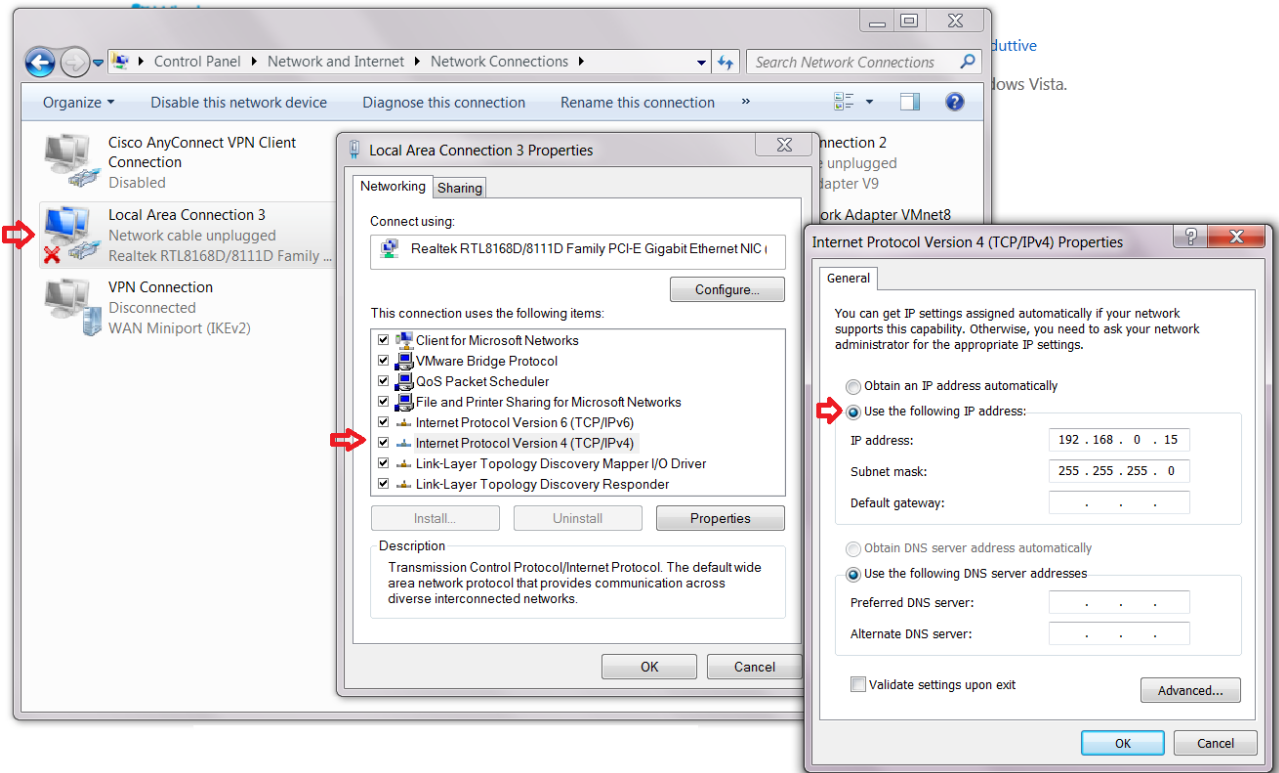
Local access from the PC is the fastest way to manage setup. It is possible to connect a PC to XWEB-EVO through the network interface supplied with an 'RJ45 Ethernet connector'. The connection between the two must be set up using a cross network cable (aka 'cross cable'). This cable is available at any computer store.

Once the physical connection has been set up, launch the browser on your PC and enter the following in the address bar <http://192.168.0.200> (XWEB-EVO default address). The connection procedure is complete when the login page opens up. Enter user name and password to start using your XWEB-EVO.

Caution: a pre-requisite to setting the connection up correctly is that the XWEB-EVO address and network interface address on your PC need to have a compatible IP class. For example, with an XWEB-EVO network interface configured with 192.168.0.200, the network interface on your PC can be configured with 192.168.0.15



To configure the network interface of your PC, it is normally necessary to access the administrator level. Refer to the documents for your computer's operating system. The figure below illustrates the steps that need to be taken to configure a network interface on a computer with WINDOWS 7.



6.5 MODEM CONNECTIVITY (“OR POINT-TO-POINT CONNECTION”)

A modem connection makes it possible to set up a connection between PC and XWEB-EVO through the phone line. This type of connection is usually required when there is no internet connection available on the local LAN line. An analogue phone line is required (not ISDN), which we recommend setting up exclusively for XWEB-EVO use.

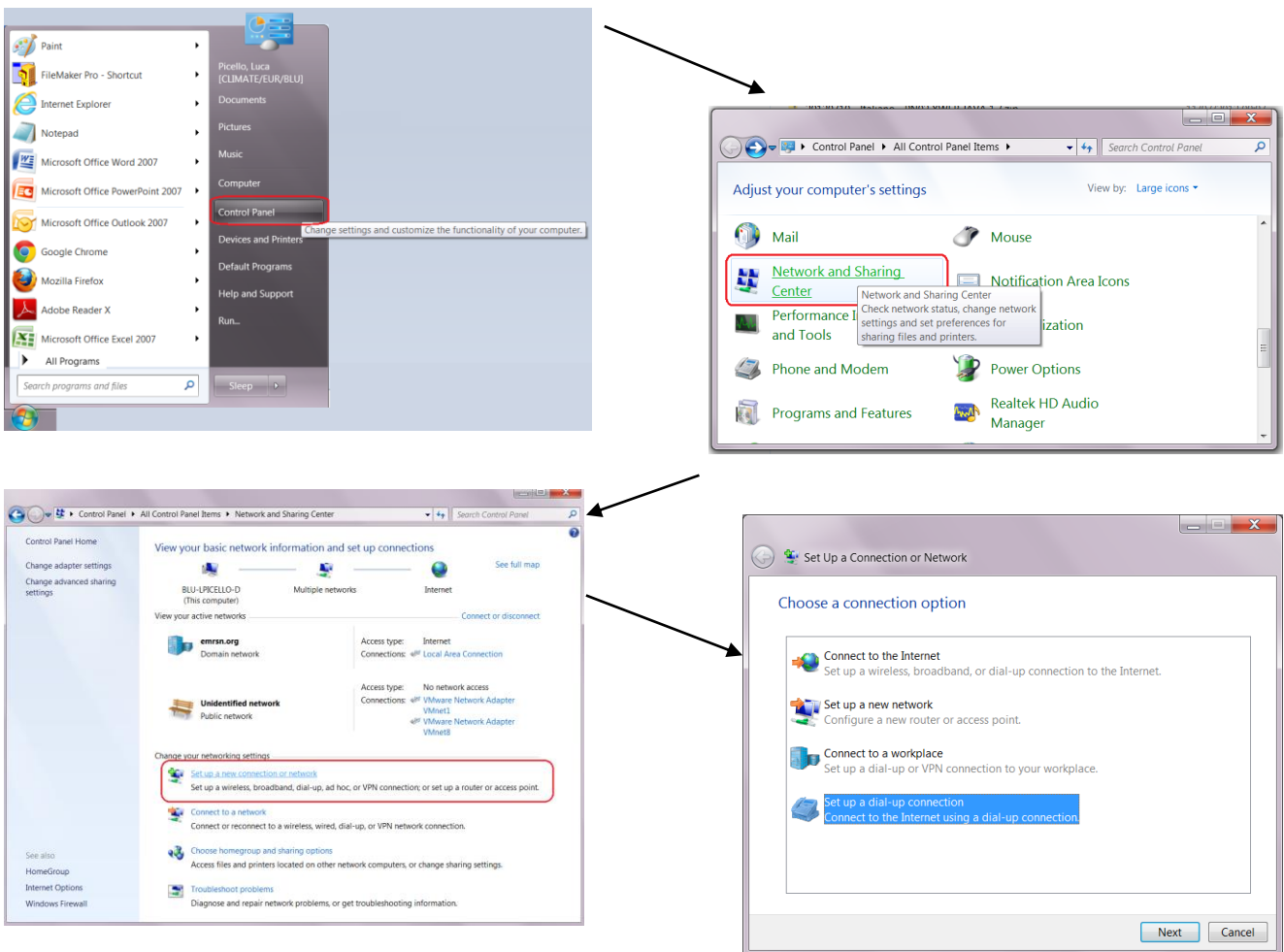
Caution: only use the supplied modem or a Dixell-recommended one. The supported external modems are: 230/100 or 24V XWEBMODEM.

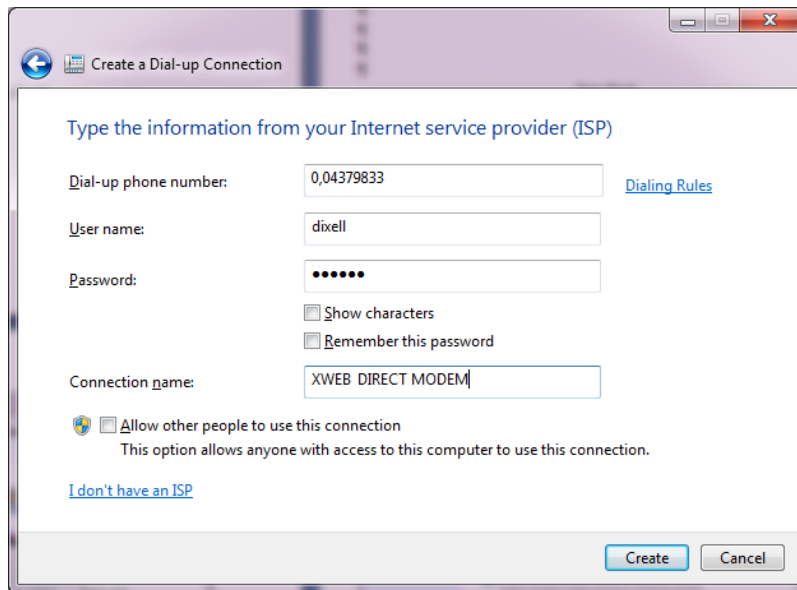
Do not buy any type of modem other than the listed ones. Dixell cannot be held responsible for any damage caused by the use of non-recommended modems. Connect the modem to the serial port on the back of the unit, using the cable supplied with the modem. Connect the modem to the telephone line using the cable supplied by the manufacturer. Be careful of any telephone switchboard to access the external line.

The connection procedure is divided into two parts:

6.5.1 SETTING UP THE REMOTE ACCESS CONNECTION

The configuration of your PC includes the creation of a "remote access" connection. The illustrations below mark the steps that need to be carried out to complete the procedure to set up a remote access connection with WINDOWS 7.

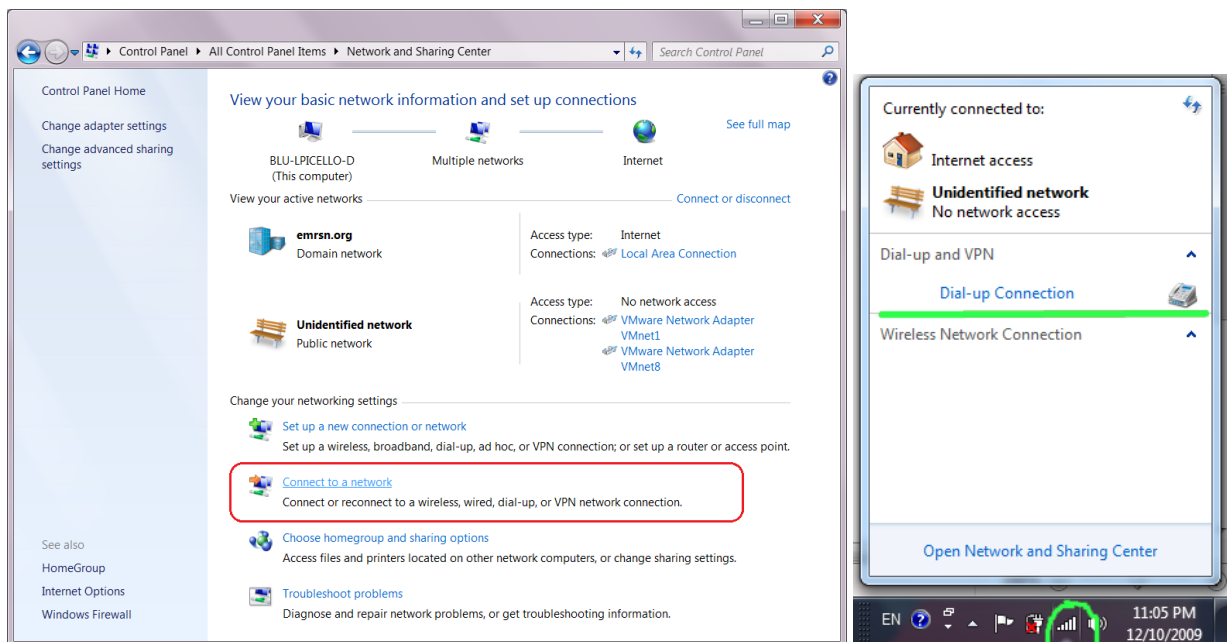




Enter the telephone number of the line that XWEB-EVO is connected to. If there is a switchboard and the number that needs to be dialed for the external line is 0, enter: 0,04379833. Enter 'dixell' as the user name and password connection parameters. Enter a name to identify the XWEB-EVO that you wish to contact with the call.

6.5.2 MAKING THE REMOTE ACCESS CALL

When the configuration step is finished, set up the call to XWEB as illustrated in the pictures below, which represent the calling procedure for computers with WINDOWS 7.

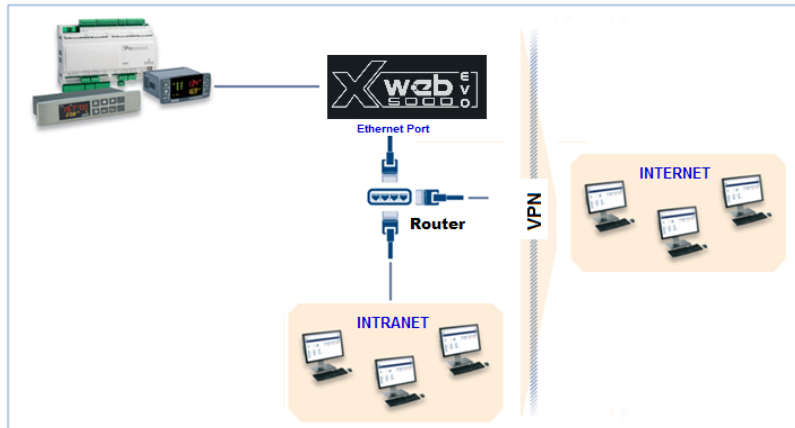


When the connection has been set up between your PC and XWEBEVO, use your browser to access <http://192.168.1.200> . When the login page opens correctly, this means that the execution test of the entire procedure is complete.

6.6 INTRANET (“OR LAN CONNECTION”) AND VPN CONNECTIVITY

This type of connection allows you to access XWEB-EVO from any PC connected to the local network. This type of connection must also be used to configure XWEB-EVO for internet connection through VPN (Virtual Private Network). This last type of connection, once it has been set up, makes your PC -- connected to the internet -- part of the local XWEB-EVO network.

Caution: your company's connection to the local network needs to be managed by qualified staff and/or a network administrator. If you wish to use a VPN network for access, this person must be able to assign a valid IP address to XWEB-EVO and provide -- for your PC -- any software and credentials.



Before connecting XWEB-EVO to the network, make sure that the IP address you wish to use for XWEB-EVO has not already been claimed and can therefore be used. You can run a PING on that address, and if you receive at least one reply the address needs to be changed, as this means it is already in use.

Example:

```
C:\Windows\system32\cmd.exe

C:\>ping 10.100.82.201 ← command to verify the IP address

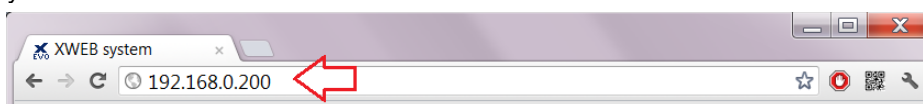
Pinging 10.100.82.201 with 32 bytes of data:
Reply from 10.100.82.201: bytes=32 time=34ms TTL=62
Reply from 10.100.82.201: bytes=32 time<1ms TTL=62
Reply from 10.100.82.201: bytes=32 time<1ms TTL=62
Reply from 10.100.82.201: bytes=32 time<1ms TTL=62 ← with a reply the IP address is
                                                         already used, you need to
                                                         set up your new xweb with
                                                         another IP address !

Ping statistics for 10.100.82.201:
    Packets: Sent = 4, Received = 4, Lost = 0 (0% loss),
    Approximate round trip times in milli-seconds:
        Minimum = 0ms, Maximum = 34ms, Average = 8ms

C:\>_
```

Another way of finding out what IP addresses are already in use on a line is using the ARP control. We recommend reading the documents relative to the operating system that you are using and/or seek the assistance of qualified staff for network configuration.

Before connecting XWEB-EVO to the network, please configure the IP (and the other network configuration parameters) using the direct local connection (with screen, keyboard and mouse) or the local PC connection with cross cable. When the network parameters are set, it is possible to connect XWEB-EVO to the local network using a standard RJ45 cable. Connect your PC to XWEB-EVO by opening your browser and entering the XWEB-EVO IP address in the address bar. <http://192.168.0.200/> The default address is: Save this address in your list of favourites.



6.7 INTERNET CONNECTIVITY ON PUBLIC IP

This type of connection allows you to access XWEB directly from any PC with an internet connection without having to install any additional software on your PC.



Caution: the Internet connection needs to be managed by qualified staff and/or a network administrator.



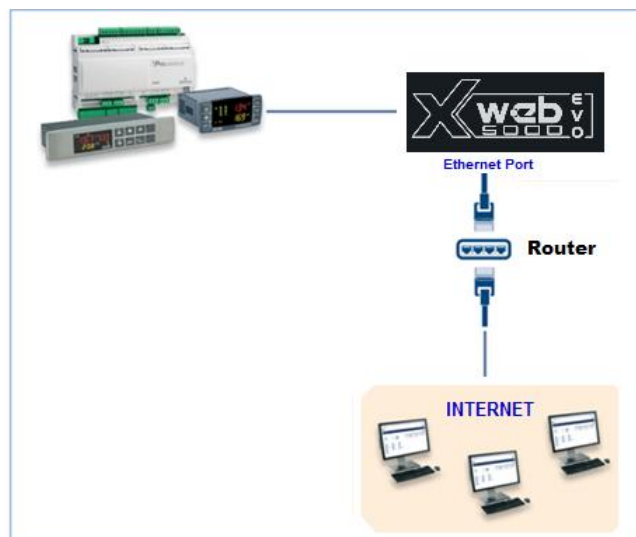
To connect your XWEBEVO to the Internet **you will need a 'public and static IP address'**, which **needs to be given to you by your ISP** (Internet Service Provider). Tell your ISP that you wish to install a web server: this will help your provider understand your requirements and provide you with a suitable connection. We strongly recommend asking for all of the connection contract details to deal with any future connection problems.

It is possible to set up an internet connection when there is a router. Router configuration, as well as XWEBEVO, depends on the data given to you by your ISP. Depending on the type of contract, the provider can supply the Router or the customer can purchase one separately.

For the first configuration it may be necessary to use a direct local connection (with screen, mouse and keyboard) or a local connection from your PC (with cross cable) or LAN line.

Provide your XWEBEVO ports (LAN side) to your ISP and/or network administrator.

- 80 (used for HTTP access)
- 22 (used for SSH access)



7. OPERATION

For operating procedures, please refer to <http://www.dixell.com> where you can find the updated version.

8. SYSTEM DATA

Fill in the table below, make a xerox copy and keep it near the XWEB.

HostName _____ [example: myXWEB001]

IP Address _____ [example: 192.168.0.123]

Gateway _____ [example: 192.168.0.1]

DNS _____ [example: 8.8.8.8]

SMTP _____ [example: 192.168.0.14]

E-mail Address _____ [example: myXWEB001@company.com]

Modem _____

Telephone number _____

9. TRADEMARKS

Consider It Solved and Intelligent Store are trademarks and Emerson Climate Technologies and the Emerson Climate Technologies logo are service marks and trademarks of Emerson Electric Co. Windows and Internet Explorer are registered trademarks of Microsoft Corporation in the United States and other countries.

Oracle and Java are registered trademarks of Oracle and/or its affiliates.

Google is a registered trademark of Google Inc.


Firefox is a registered trademark of the Mozilla Foundation.

Yahoo! is a registered trademark of Yahoo! Inc.

Linux is a trademark registered to Linus Torvalds.

Other names may be trademarks of their respective owners.

10. NOTES

DIXELL [™]	 EMERSON [™]
Dixell S.r.l. - Z.I. Via dell'Industria, 27 - 32016 Alpago (BL) ITALY Tel. +39.0437.9833 r.a. - Fax +39.0437.989313 - EmersonClimate.com/Dixell - dixell@emerson.com	